

Bise I



Delta Powerboats 88 Carbon

m/y Bise I

Brand / Type : Delta Powerboats 88 Carbon
Launched : 2020 (Luksusjaht AS)
Dimensions : 25.88 x 6.22 x 1.72 mtr
VIN : SE-DTA80005F920
Flag : Malta
Asking price : € 3.950.000 (excl. VAT)



Brokers description

ABOUT

The Delta Powerboats 88 is designed as a planing carbon fiber hull. Also the superstructure is carbon. She features a 6.25m beam and a 1.72m draft. This yacht is built over 2 decks with an internal volume of 85 Gross Tonnes.

Bise I is built as hull #5 of the 88 Carbon series from Delta Powerboats, first commissioned in July 2020.

OUTSIDE

Bise I's structure is built entirely from carbon, which ensures high performance and a lightweight build. It features a planing hull configuration with a plumb bow shape, optimizing both speed and stability in various sea conditions. The vessel is coated in a clean white hue, providing a sleek and modern appearance, while the boot top and below the waterline sections are highlighted in black, adding a sharp contrast.

The deck equipment is robust, with substantial bollards and mooring warps that pass through fairleads. The yacht's fenders slot into designated holders, enhancing convenience. The forward sloping windscreen of the helm station offers a wide field of view. The bow features a practical seating area with an adjustable table for dining and a sunbathing section. The side decks are accessible through side door access near the helm. The foredeck is equipped with substantial deck gear, including an anchor winch and a forward-facing U-shape settee with sunshade and a large sunbed with ample storage below. The flybridge also includes a large sunbathing area, a wet bar with a barbecue, and a large seating area with a fold-out table. The design of Bise I is very practical, from the various large deck lockers for storing fenders to the docking stations on each side. The engineering quality is evident in details like the door hinges and the carbon fiber weave visible on the steps leading to the flybridge.



INTERIOR

The galley is well-equipped and efficiently laid out. It includes high-quality appliances such as Miele fridge freezers, a Miele dishwasher, an electric hob, and an oven. The extractor fan is a notable feature, blending seamlessly into the design. Storage is ample, with cabinets and compartments throughout the galley area, ensuring that all kitchen essentials are neatly stowed.

The helm station is raised slightly to provide a clear view of the surroundings. It features three large Garmin screens, a joystick control for the IPS system, and various control panels for monitoring fuel levels, fresh water, pumps, and lighting. The helmet's forward-sloping windscreen adds a practical touch, combining a commercial feel with luxury. The helm seats are lift bolster types, allowing for adjustable seating positions. The middle helm seat is electrically height adjustable. Above the helm seats is a large glass opening roof window. The saloon area is designed for relaxation and socializing. The color scheme and wood tones extend into this space, maintaining the yacht's cohesive aesthetic with a Nordic style and atmosphere. The layout includes a lounging area and a dining area, with comfortable seating and a large dining table. The saloon is spacious yet maintains a sense of intimacy through its thoughtful design and finish of the materials.

ACCOMODATION

Bise I can very comfortably accommodate up to 8 guests across 4 well-appointed cabins in the bow area. The full beam owner's cabin is located aft and features a comfortable bed with an adjacent relaxing area, providing a quiet space for unwinding. The cabin is equipped with a unique dual-sided pop-up TV system, allowing viewing from both the bed and the relaxing area. Additionally, the cabin includes a large walk-in wardrobe and a private ensuite bathroom with twin sinks and a spacious rainfall shower. Positioned at the bow is the VIP guest cabin, which offers a generous amount of space and a private ensuite bathroom. This cabin includes ample storage and sophisticated lighting. There are two additional guest cabins located amidships. These cabins are versatile and can be configured as either doubles or singles to suit the guests' needs. Both cabins come with their own ensuite bathrooms. Each cabin is equipped with AV equipment and air conditioning controls to provide a comfortable environment. In this area you also find a large laundry/utility room for easy servicing. Located aft with a separate entrance from the outside PS deck, the crew quarters can be reached. Equipped with a compact galley and two bunk cabins, each with adequate storage and natural lighting. There is also a shared bathroom with a shower, sink, and toilet. The crew area includes a control panel for managing the yacht's systems, and a small seating area.



ENGINES AND PERFORMANCE

This Delta 88 is powered by triple diesel Volvo Penta IPS-1200 engines (900 hp each). Motoryacht Bise I is capable of reaching an amazing top speed of 39 knots, with a comfortable cruising speed of 26 knots. With her 5,500 liter fuel tanks she has a maximum range of over 600 nautical miles at 26 knots. The design makes her fast and efficient as she really slices through the water.



Specifications "Bise I"

Engine and energy

Main Engines	:	triple configuration
Brand	:	Volvo Penta
Type	:	IPS-1350
Year of commission	:	2020
Engine type	:	Inboard engine
Power hp / kw	:	1.000 / 735
Drive	:	IPS drive IPS 30D with duo-props
Fuel	:	Diesel
Running hours	:	1.150 (all 3 engines, Apr-2026)
Cruising speed	:	26 knots
Max. speed	:	39 knots
Fuel tanks	:	1x 2.900 and 1x 3.100 litres
Fuel capacity	:	6.000 litres total
Cooling	:	Indirectly
Bow thruster	:	Bowthruster, SidePower, 240 Tci, 15hp, 24V
Number of batteries	:	6 x mastervolt 24/5500 service, 2x mastervolt 24/5500 electronics
Generator	:	2x Fisher Panda 30Kw generator, 1800 and 2200 hours Apr-2026
Battery charger	:	4x Mastervolt
Inverter	:	4x Mastervolt 24/3500/100
Shore power	:	1 x 63A shore power cable on glendinning reel
Stabilizer	:	Seakeeper 16 Gyro
Watermaker	:	Dometic XTC 1800 water maker, 220 LPH (new 2025)



Additional description:

- 4x Volvo Penta docking stations/joystick (main/flybridge/SB aft wing/P aft wing)
- Volvo Penta GPS anchor program (DPS Dynamic Positioning System)
- Humphree interceptors 1,400 mm with auto trim/list and twin controls (main station, flybridge)
- Dedicated Mastervolt lithium batteries for windlass + bow thruster

Navigation electronics

GPS	:	Garmin
Chartplotter	:	3x Garmin 22" HD multifunction touch displays
VHF	:	Garmin
Radar	:	Garmin GMR 626 xHD2 6' open array radar
Speed / Depth	:	Garmin
Autopilot	:	Volvo Penta
Gauges	:	watertank, fuel tanks, wate tanks
Ais	:	Yes

Additional description:

- FLIR night camera
- Mastervolt CZone 24V/220V
- Apple iPad Pro with pre-installed CZone and Control4 apps
- 3 x Garmin engine room cameras
- Rear view camera



Safety

Liferaft	:	2x 8 pers.
Epirb	:	Yes
Bilge pumps	:	several, electric
Engine room camera	:	Yes



Interior and accommodation

Number of cabins	:	4, 1 owners cabin, 1 VIP guest, 2 guest cabins
Crew cabins	:	2 with bunk beds
Number of beds	:	8 + 4 crew
Toilets	:	5, Tecma silent flush electric
Audio/ TV	:	Full audio and TV systems in all cabins
Heating	:	Webasto, each cabin own digital control and fan coils
Air conditioning	:	Webasto triple compressor chiller 150,000 BTU, each cabin with own digital control
Water pressure	:	Dual freshwater pumps and accumulator tank, 230V
Water boiler	:	2x 80 litres
Water tank	:	1.200 litres
Holding tank	:	315 litres blackwater, 315 litres gray water and 150 litres oil
Oven	:	Yes
Stove	:	Electric
Refrigerator	:	2x Miele with freezer

Additional description:

- Wine cooler for 20 wine bottles
- Dishwasher
- Sonance Sound roof-mounted speakers throughout yacht
- Opacmare electrically locked pantograph side doors
- Helmstation with electrical height adjustable seat
- TV with lift in salon and double tv with lift in owners cabin
- Electric glass sliding roof above helmstation
- Courtesy floor LED lights entire yacht
- Electrical opening VIP bed for extra storage



Exterior

Deck covering	:	Teak
Underwater lighting	:	LED lights
Outside water pump	:	Jabsco washdown pump with 2 hose bibbs (fore deck + aft deck)
Outdoor cushions	:	full cushions outside
Fenders, lines	:	complete
Cockpit table	:	3x Teak, aftdeck, forward and flybridge
Sun deck	:	On flybridge and front deck
Anchor	:	80 kg, stainless steel
Anchor windlass	:	Electric 24V Lewmar V-series windlass with capstan, foot switch and remote control
Anchor mounting	:	Chain 100 m stainless steel
Dinghy	:	Williams 385 Jet tender
Swimming platform	:	hydraulic with integrated stairs

Additional description:

- Foldable bimini on flybridge
- Isothermal 50 liter fridge + icemaker on flybridge
- Sunshades for fore and aft decks
- 2x extra Volvo joystick controls for docking
- Opacmare hydraulic pasarelle with remote
- Opacmare "transformer" swim platform multifunctional
- Courtesy LED lights on all decks
- 2 x 24V Lewmar mooring winches, aft, with foot switches
- 1x HB Technik electrohydraulic winch with controls for tender
- 1 x HB Technik electrohydraulic garage door with controls



































































































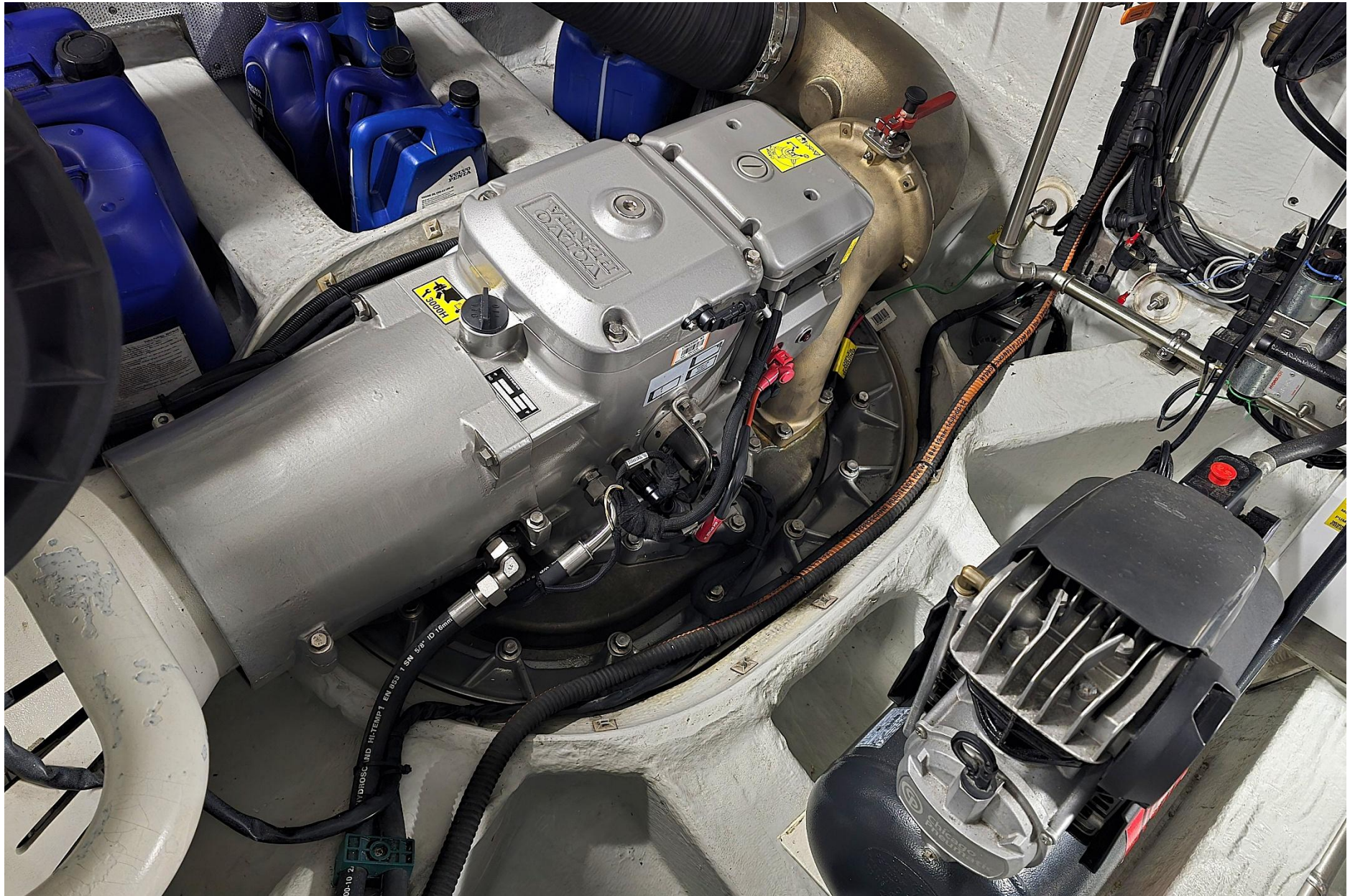






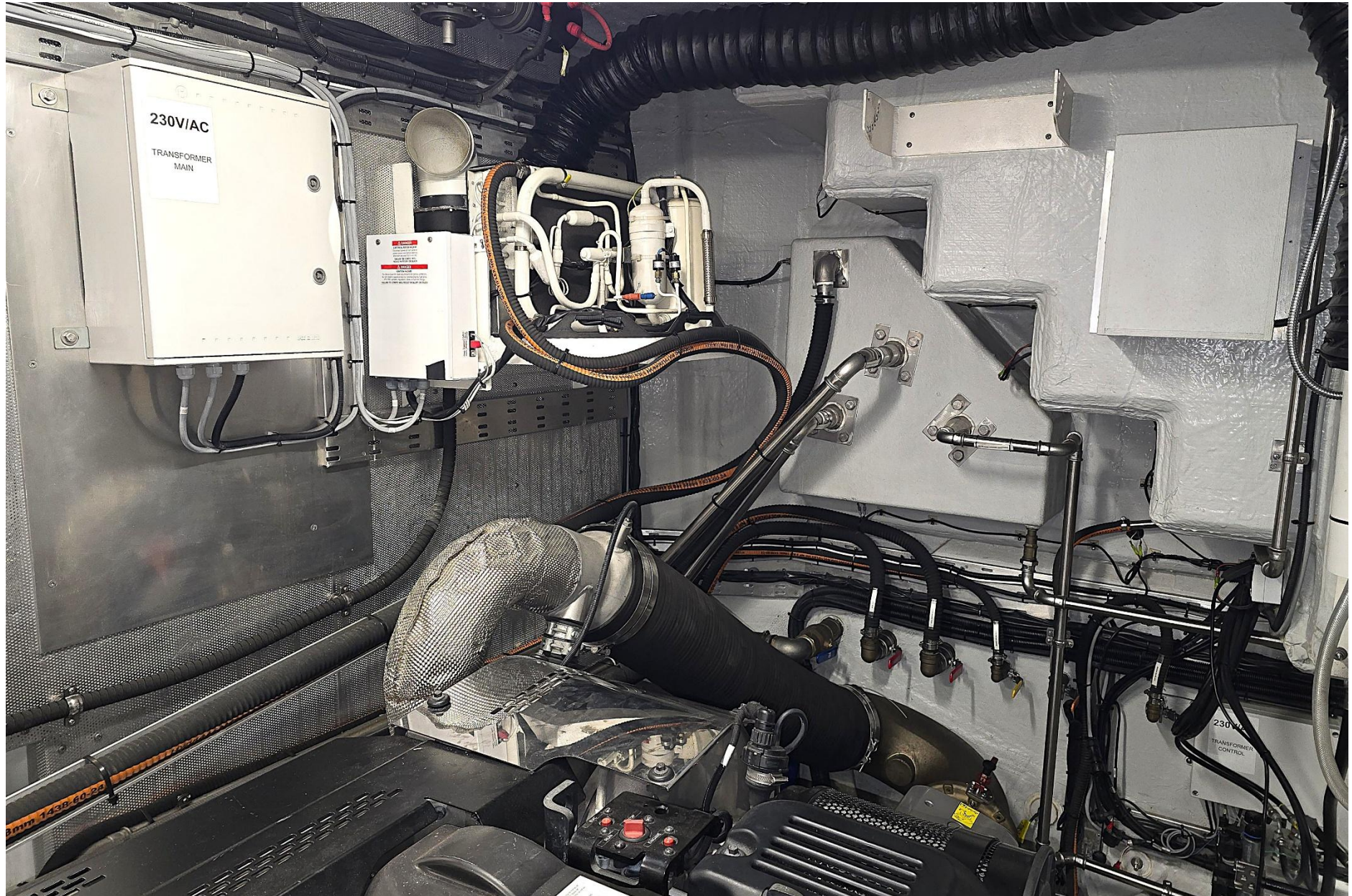


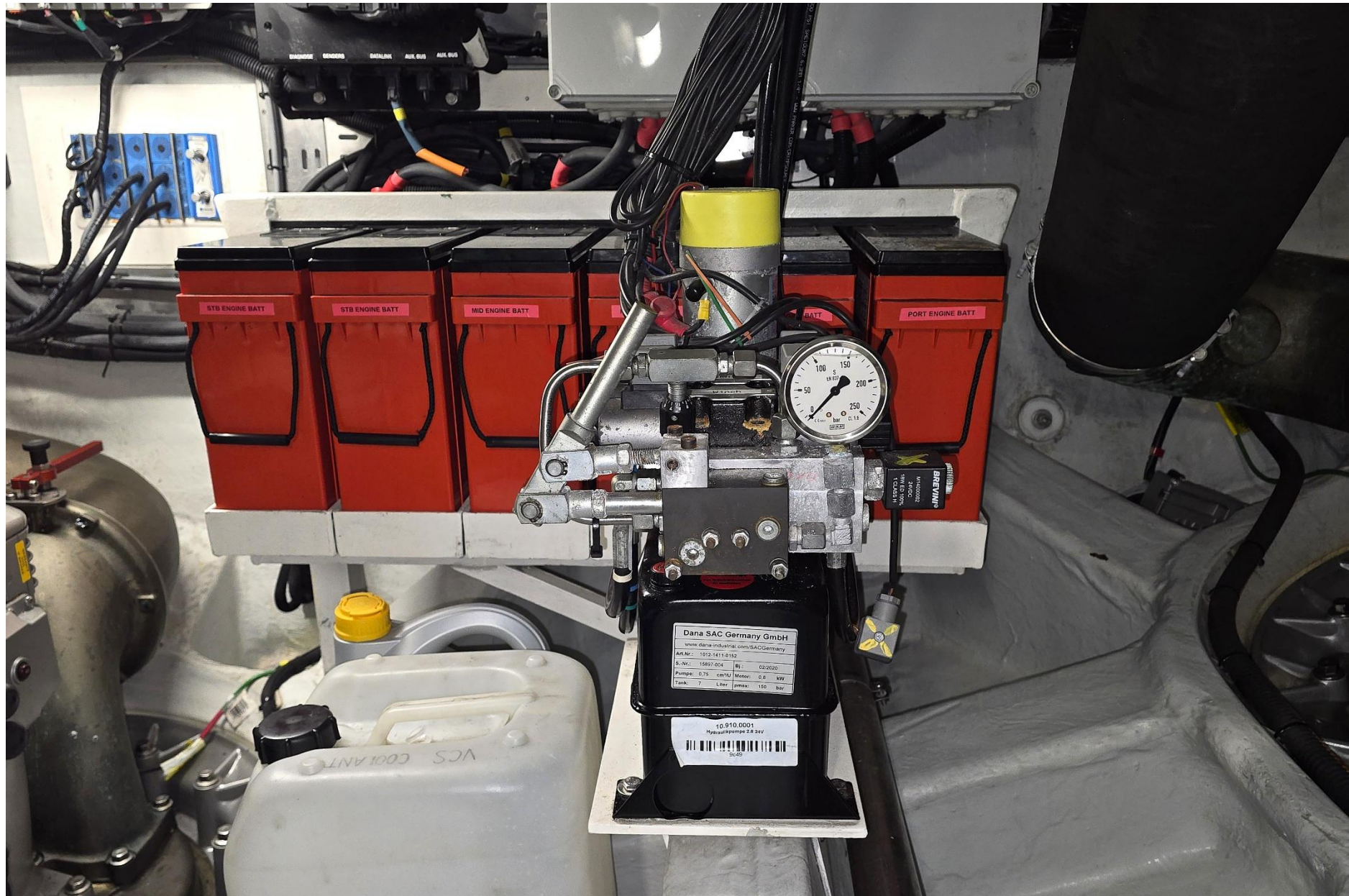










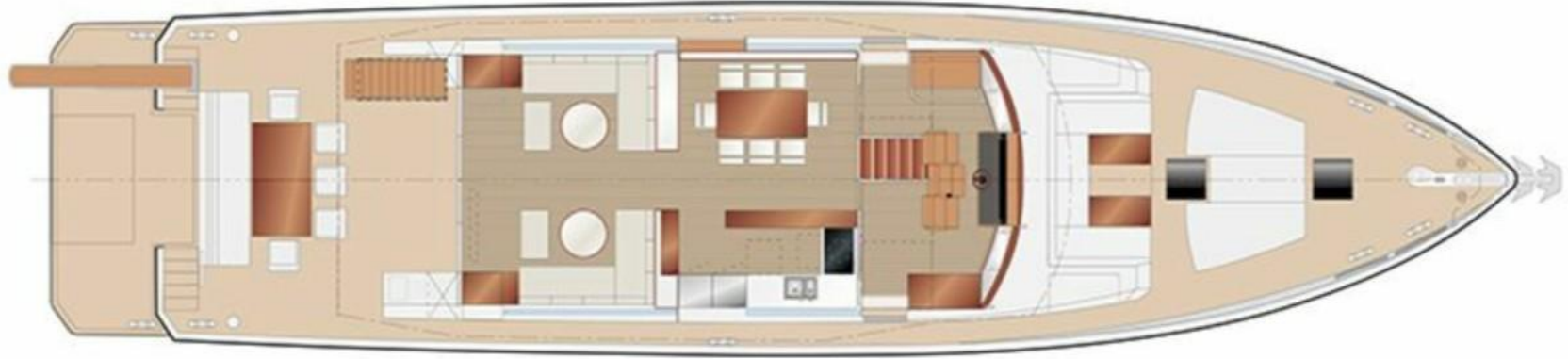












Your yachtbrokers:

Guido van den Berg

Guido is a professional broker from White Whale Yachtbrokers and can help you with contractual questions, arrange a viewing etc.

Mobile: +31 (0) 646 086 467

Mail: guido@wwy.nl

Herbert Dercksen

Herbert has sailed on "Bise I" during a 3 day seatrial with survey.
You can reach him for questions.

Mobile: +31 (0) 653 444 600

Mail: herbert@xtenders.com